

Diocese of Portsmouth
Department for Administration
St Edmund House
Bishop Crispian Way
PORTSMOUTH
PO1 3QA

☎ 023 9282 6518
☎ 023 9287 3567

Email: GPalethorpe@Portsmouthdiocese.org.uk

Health and Safety Bulletin (No7)

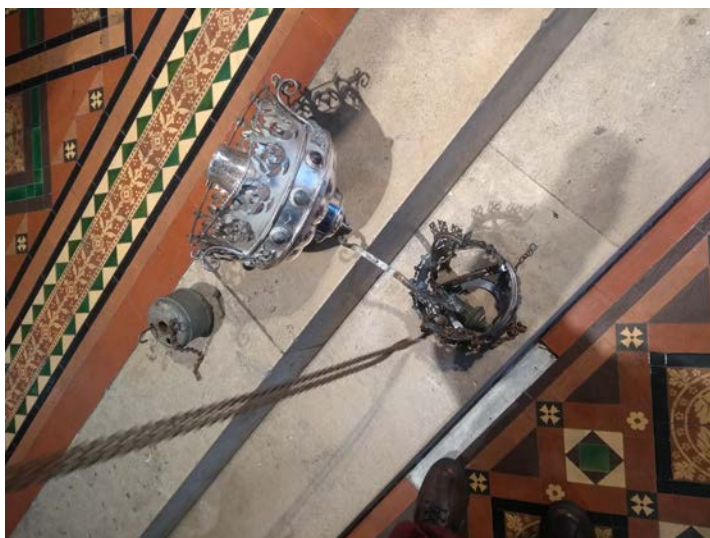
Issued 4th April, 2018

Suspended Sanctuary Lamps on Chain Riser Systems

Dear Father,

Following recent events, could you please check whether your Parish Church/s has a suspended sanctuary lamp on a chain riser system. Following an accident to one of our priests where the chain riser system snapped resulting in the priest sustaining facial injuries requiring several stitches, and the heavy counterweight falling several feet to the floor narrowly missing both the priest and a number of school children who were gathered around the altar whilst practising for a Stations of the Cross play. It was noted that the lamp pulley system was rusty and there were no records to demonstrate that it had been regularly maintained.

We are asking that any such riser system are immediately examined by a competent person to establish that the system is both safe, secure and still fit for use. In addition, the riser system should be regularly checked and maintained.



With Best Wishes

Graham Palethorpe

Health and Safety Administrator